

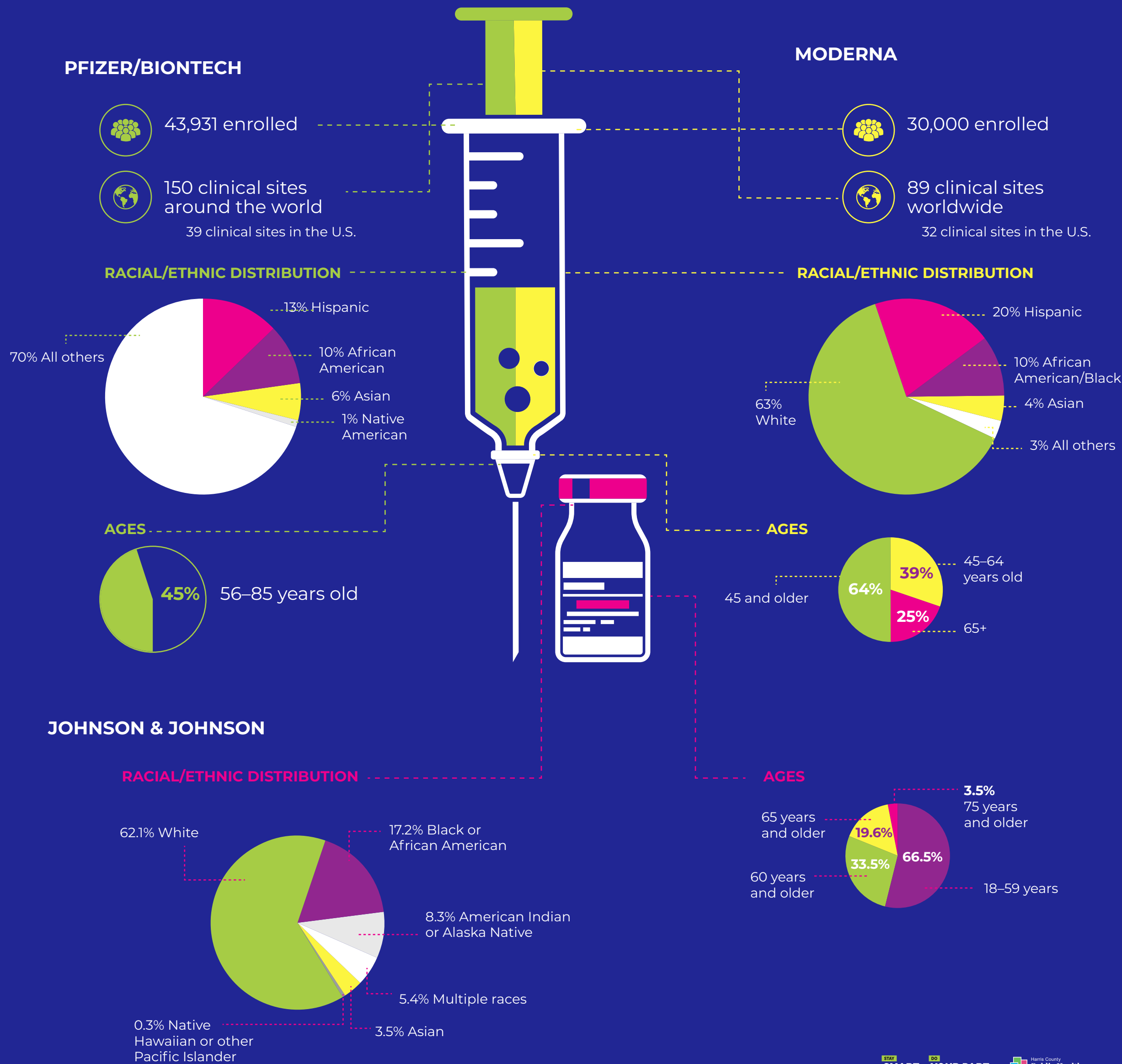
THE FACTS

ON THE COVID-19 VACCINE

HOW DO VACCINES WORK?

A vaccine trains the immune system to recognize viruses, bacteria, and other germs, or pathogens, so the body can react. The human body produces special proteins called antibodies to fight germs like the virus that causes COVID-19. The COVID-19 vaccines introduce elements that mimic their structure into the body and cause your body to safely develop antibodies that recognize and fight the coronavirus that causes the disease, greatly reducing the risk for full-scale infection.

A CLOSER LOOK AT THE CLINICAL TRIALS:



WHO'S GETTING THE VACCINE?

All Texans over the age of 16 are eligible for the Moderna and Johnson and Johnson COVID-19 vaccines, and people over the age of 12 are eligible for the Pfizer vaccine.

Harris County Public Health has created an efficient, fair, and equitable distribution process for vaccines. As HCPH receives shipments of vaccines, individuals will be selected from the waitlist based on a randomized process, including individuals in phase 1A, 1B, 1C, and older individuals prioritized over those younger.

The Texas Department of State Health Services has prioritized vaccine distribution to residents in categories 1A, 1B, and 1C. Adults who are not included in Phases 1A, 1B, or 1C are still eligible for vaccination and may register for the waitlist.

WHO IS INCLUDED IN PHASES 1A, 1B, AND 1C?

- Frontline Health Workers
- Long-term Care Facility Residents
- Persons 50 Years or Older
- Persons 16 Years or Older with Chronic Medical Conditions at Increased Risk of Severe Illness
- Education and Child Care Workers, Including Teachers, Staff, and Bus Drivers

For questions, call (832) 927-8787.

Call center is open 8 a.m.–5 p.m. Monday–Saturday.